



**Government of India
Ministry of Earth Sciences
India Meteorological Department**



Press Release

Date: 12th September, 2025

Time of Issue: 1330 hours IST

Subject: i) Under the influence of Low pressure area over westcentral & adjoining northwest Bay of Bengal off north Andhra Pradesh & south Odisha coast, heavy to very heavy rainfall likely over Odisha, Coastal Andhra Pradesh & Yanam on 12th & 13th, Telangana during 12th-14th and over Maharashtra during 13th - 15th September, 2025.
ii) Enhance rainfall activity over northeast & adjoining east India with possibility of isolated heavy to very heavy rainfall likely over Assam & Meghalaya during 12th-16th; Nagaland, Manipur, Mizoram & Tripura during 12th-15th; Arunachal Pradesh during 13th-15th; Bihar on 13th; Sub-Himalayan West Bengal & Sikkim on 13th & 14th September, 2025.
iii) Conditions are becoming favourable for withdrawal of Southwest Monsoon from some parts of West Rajasthan around from 15th September, 2025.

Realised weather during past 24 hours till 0830 hours IST of today, the 12th September, 2025:

- ❖ Heavy to very heavy rainfall with Extremely heavy rainfall (≥ 21 cm) has been recorded at isolated places over Sub-Himalayan West Bengal and Telangana.
- ❖ Very heavy rainfall (12-20 cm) has been recorded at isolated places over Uttarakhand.
- ❖ Heavy rainfall (7-11 cm) has been recorded at isolated places over Himachal Pradesh, East Uttar Pradesh, East Madhya Pradesh, Vidarbha, Chhattisgarh, Sikkim, Assam & Meghalaya, Nagaland, Mizoram & Tripura, Odisha, Jharkhand, Marathwada, Rayalaseema and Tamil Nadu.

For more details of realised weather, kindly refer [Annexure I](#).

i. Weather Systems, Forecast and Warnings (refer to [Annexure II & III](#)):

- ❖ The western end of the **Monsoon trough** at mean sea level runs slightly north of its normal and eastern end runs south of its normal position.
- ❖ The well marked low pressure area over northwest Arabian Sea and adjoining southwest Pakistan weakened into a low pressure area over northwest Arabian Sea and has become less marked at 0530 hours IST of today, the 12th September, 2025.
- ❖ Under the influence of the upper air **cyclonic circulation** over westcentral & adjoining northwest Bay of Bengal off north Andhra Pradesh & south Odisha coast, a **low pressure area** has formed over the same region at 0830 hrs IST of today, the 12th September, 2025. The associated upper air cyclonic circulation extended up to 5.8 km above mean sea level tilting southward with height. It is likely to move west-northwestwards across south Odisha and adjoining north Andhra Pradesh and south Chhattisgarh during next 2 days.
- ❖ A **trough** runs from upper air cyclonic circulation associated with low pressure area over west central & adjoining northwest Bay of Bengal off north Andhra Pradesh and south Odisha coast to south Maharashtra in lower & middle tropospheric levels.
- ❖ Upper air **cyclonic circulations** lay over north Haryana, northeast Jharkhand, and Tripura in lower tropospheric levels.

Under the influence of these systems, the following weather is likely:

Northeast India:

- ❖ Light/moderate rain/thunderstorm at most/many places with isolated **heavy rainfall** likely over Arunachal Pradesh during 12th-18th; Assam & Meghalaya on 17th and Nagaland, Manipur, Mizoram & Tripura during 12th-

17th September with **very heavy falls over Assam & Meghalaya during 12th-16th and Nagaland, Manipur, Mizoram & Tripura during 12th-15th; Arunachal Pradesh during 13th -15th September.**

South Peninsular India:

- ❖ Light to moderate rain/thunderstorm & gusty winds (speed 30-40 kmph) at many/some places with isolated **heavy rainfall** likely over Tamil Nadu on 12th, 16th & 17th; Coastal Karnataka on 13th & during 15th-18th; North Interior Karnataka during 12th-14th; South Interior Karnataka on 12th, 15th & 16th; Coastal Andhra Pradesh & Yanam, Rayalaseema on 12th & 13th; Telangana during 12th-15th September with **very heavy falls over Coastal Andhra Pradesh & Yanam on 12th and Telangana on 12th & 13th September.**
- ❖ Strong surface winds (speed reaching 30-50 kmph) very likely over Coastal Andhra Pradesh & Yanam and Rayalaseema during next 5 days.

East & Central India:

- ❖ Light to moderate rain/thunderstorm at most/many places with isolated **heavy rainfall** likely over East Madhya Pradesh, Vidarbha & Chhattisgarh during 12th-14th; West Madhya Pradesh on 14th & 15th; Andaman & Nicobar Islands on 16th & 17th; Sub-Himalayan West Bengal & Sikkim during 12th-18th; Bihar during 12th-16th; Jharkhand on 15th & 16th; Odisha on 12th & 13th September with isolated **very heavy falls over Odisha on 12th; Bihar on 13th and Sub-Himalayan West Bengal & Sikkim on 13th & 14th September.**

West India:

- ❖ Light to moderate rain/thunderstorm at some/isolated places with **isolated heavy rainfall** likely over Madhya Maharashtra & Marathwada during 12th-15th; Konkan & Goa during 12th-18th; Gujarat Region during 14th-16th September with **very heavy falls over Marathwada on 13th; Konkan & Goa and Madhya Maharashtra on 14th & 15th September.**

Northwest India:

- ❖ Light to moderate rain/thunderstorm at some/isolated places with **isolated heavy rainfall** likely over Himachal Pradesh on 13th & 14th; Uttarakhand during 12th-16th; Haryana, Chandigarh on 13th; West Uttar Pradesh on 12th; East Uttar Pradesh during 15th-17th and Punjab on 17th & 18th September with **very heavy falls over Uttarakhand on 12th & 13th September.**

Fishermen warning:

Fishermen are advised not to venture into the following from 12th to 17th September 2025 to the following Areas:

Arabian Sea

Along and off the Somalia coast, some parts of westcentral & southwest Arabian sea during 12th to 15th September; Along and off the Somalia coast, some parts of southwest adjoining westcentral Arabian sea during 15th to 17th September, along & off Oman coast on 12th & 14th; along and off Konkan coast and eastcentral Arabian Sea during 14th to 16th September.

Bay of Bengal

Along & off south Odisha & adjoining sea areas for 12th September, Along & off Andhra Pradesh coast & westcentral adjoining northwest Bay of Bengal during 12th to 14th September, off north Tamil Nadu coast on 13th September, some parts of southwest Bay of Bengal, along and off south Sri Lanka coast during 12th to 17th; over Gulf of Mannar & adjoining Comorin area on 12th to 17th September.

ii. Weather conditions and forecast over Delhi/NCR during 12th September to 15th September 2025 (Annexure IV)

For more details, kindly refer National Weather Bulletin:

https://mausam.imd.gov.in/responsive/all_india_forecast_bulletin.php

For District wise warnings refer: <https://mausam.imd.gov.in/responsive/districtWiseWarningGIS.php>

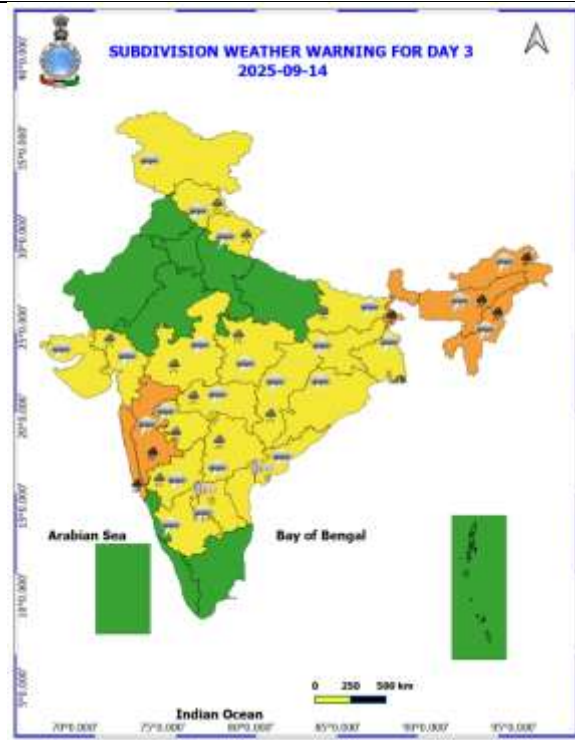
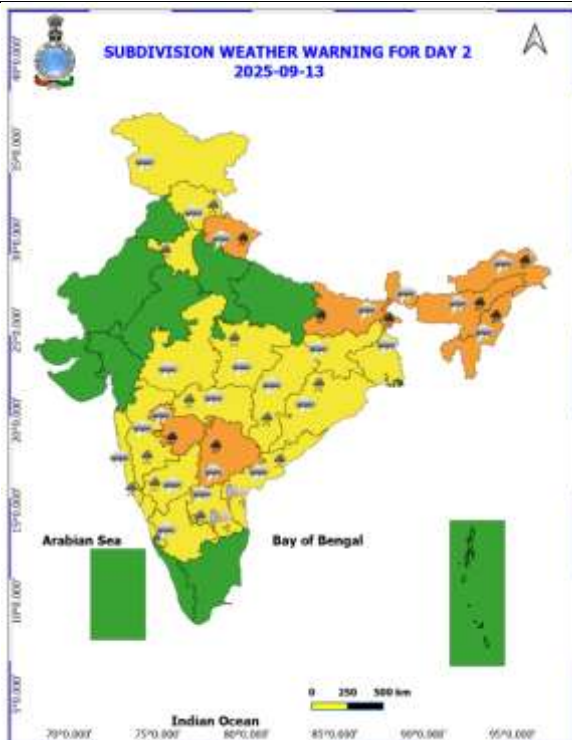
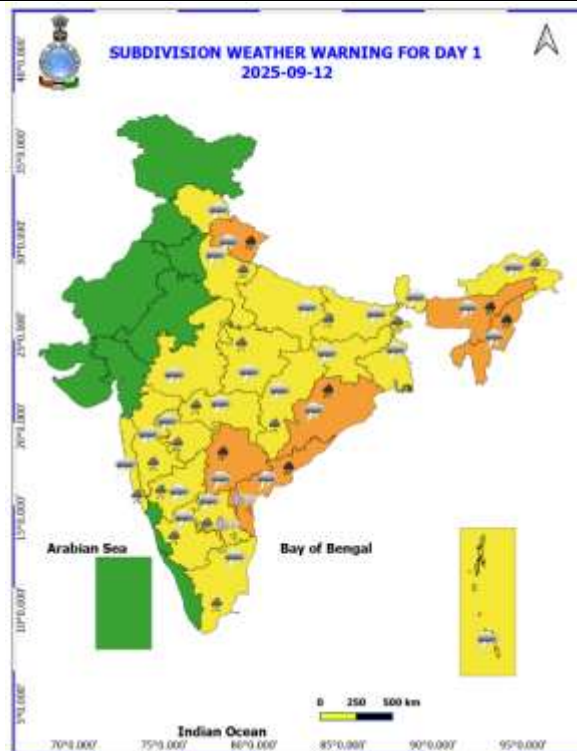
For Fishermen warning refer <https://rsmcnewdelhi.imd.gov.in/fishermen-warning.php>

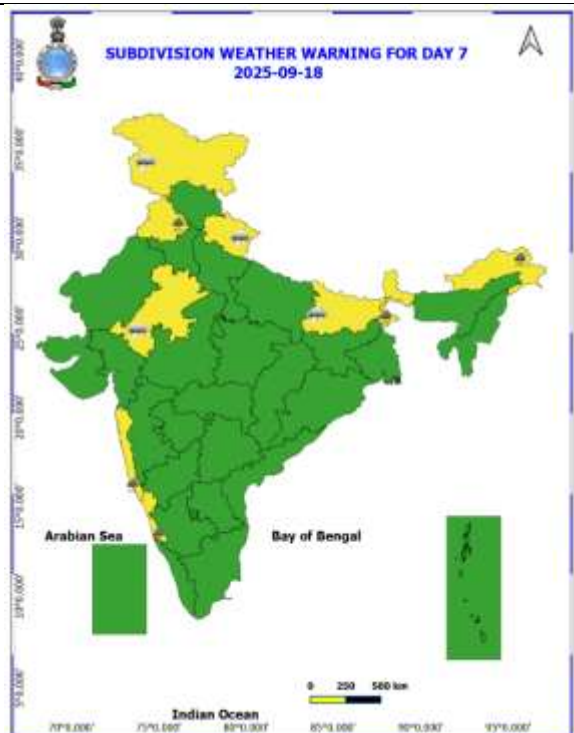
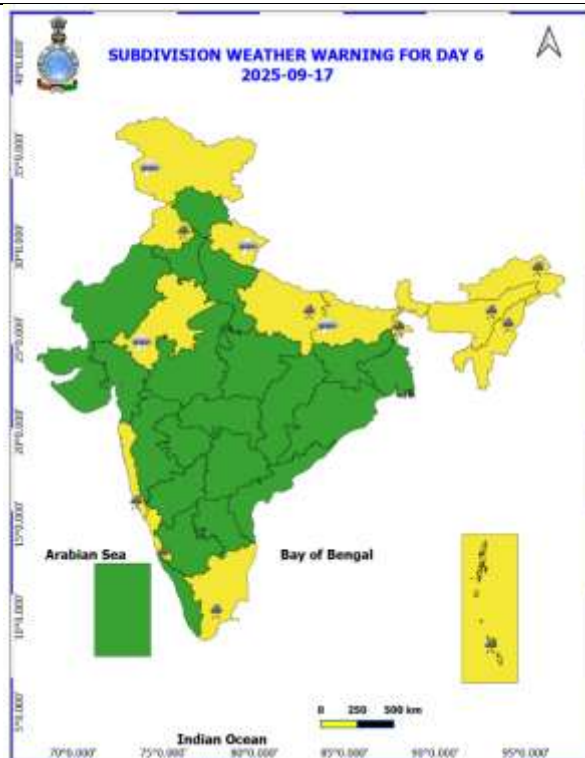
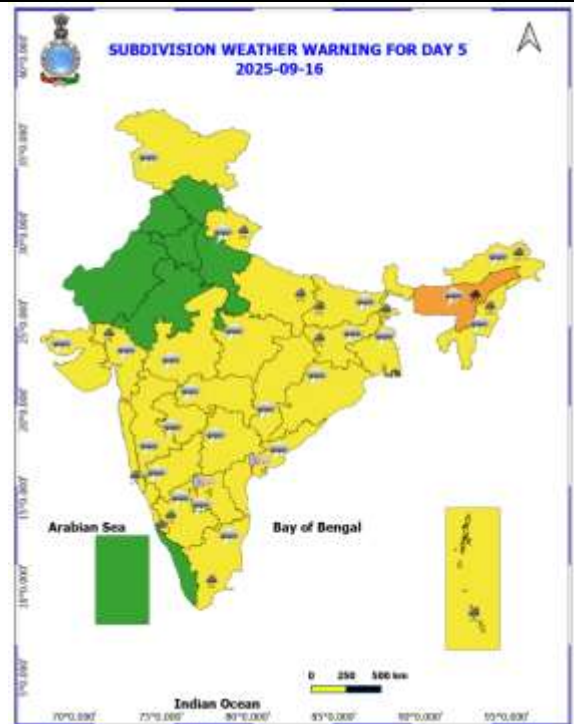
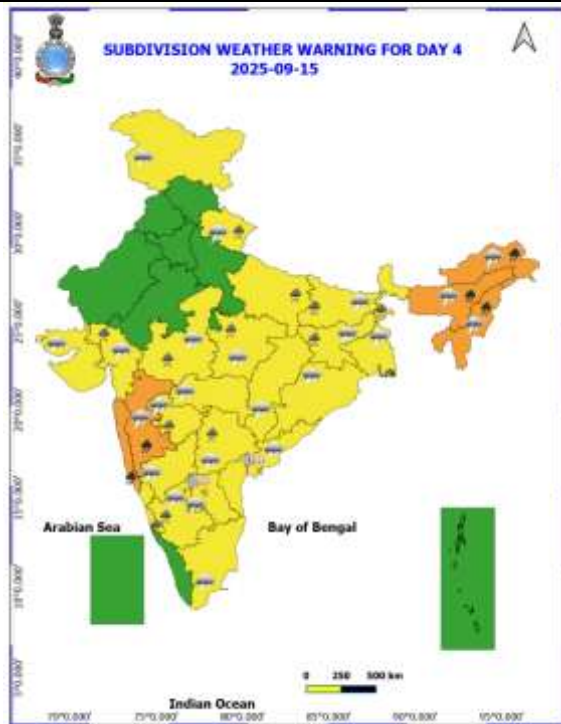
Rainfall recorded (in cm) during past 24 hours till 0830 hours IST of today, the 12th September (≥ 7cm):

- ❖ **Telangana:** Huzurabad (dist Karimnagar) 25, Chigurumamidy (dist Karimnagar) 22, Medak (dist Medak) 20, Medak(arg) (dist Medak) 19, Shankarapatnam (dist Karimnagar) 12, Bachhanpet (dist Jangaon) 12, Cgwb Nagole(a) (dist M. Malkajgiri) 11, Hayathnagar (dist Rangareddy) 10, Nanganur (dist Siddipet) 10, Parkal (dist Hanumakonda) 10, Raghunathpalle (dist Jangaon) 9, Bhuvanagiri (dist Y. Bhuvanagiri) 9, Kalwakurthy (dist Nagarkurnool) 9, Jammikunta (dist Karimnagar) 8, Banswada (dist Kamareddy) 8, Hanamkonda (dist Hanumakonda) 8, Yellareddy (dist Kamareddy) 8, Ghanpur (dist Jangaon) 7, Yacharam (dist Rangareddy) 7, Ramayampet (dist Medak) 7, Jangaon (dist Jangaon) 7, Vangoor (dist Nagarkurnool) 7, Thimmapur (dist Karimnagar) 7, Navipet (dist Nizamabad) 7, Bejjanki (dist Siddipet) 7;
- ❖ **Sub-Himalayan West Bengal & Sikkim:** Pundibari (dist Cooch Behar) 22, Mathabhanga (dist Cooch Behar) 9, Dentam (dist Gyalshing) 7;
- ❖ **Uttarakhand:** Shama (AWS) 13, Champawat 7, Lohaghat 7;
- ❖ **Tamil Nadu:** Srimushnam (dist Cuddalore) 11, Tirupuvanam (dist Sivagangai) 9, Kollidam (dist Mayiladuthurai), DSCL Virugavoor (dist Kallakurichi) 7 each;
- ❖ **Assam & Meghalaya:** Matijuri (dist Hailakandi) 11, A P Ghat (dist Cachar) 8, Dhekiajuli (dist Sonitpur) 7, Lumding (dist Hojai) 7;
- ❖ **Nagaland, Mizoram & Tripura:** Kailashahar Aero (dist Unakoti) 10, Kailashahar Aws (dist Unakoti) 8, Kanchanpur (dist North Tripura) 8, Dharmanagar/ Panisagar (dist North Tripura) 7, Sonamura Arg (dist Sipahijala) 7, Sonamura (dist Sipahijala) 7, Ashapara Aws (dist North Tripura) 7, Kadamtala Arg (dist North Tripura) 7;
- ❖ **Rayalaseema:** Atmakur (dist Nandyal) 9;
- ❖ **East Madhya Pradesh:** Jaitpur (dist Shahdol) 9;
- ❖ **Jharkhand:** Godda (dist Godda) 9, Fatehpur (dist Jamtara) 8, Jamtara (dist Jamtara) 8, Tilaiya (dist Koderma) 7, Godda Kvk Aws (dist Godda) 7;
- ❖ **East Uttar Pradesh:** Bansi Cwc (dist Siddharth Nagar) 8, Bansi Tehsil (dist Siddharth Nagar) 8, Uska Bazar Fmo (dist Siddharth Nagar) 7;
- ❖ **Chhattisgarh:** Charama (dist Kanker) 8, Patharia (dist Mungeli) 7;
- ❖ **Vidarbha:** Perseoni (dist Nagpur) 8, Wardha (dist Wardha) 7;
- ❖ **Marathawada:** Kinwat (dist Nanded) 8;
- ❖ **Odisha:** Bhograi (dist Balasore) 8, Purushottampur (dist Ganjam) 8, Berhampur (dist Ganjam) 7, Raruana (dist Mayurbhanj) 7;
- ❖ **Himachal Pradesh:** Murari Devi 7.

Table-1								
7 Days Rainfall Forecast								
S.No.	Subdivision	12- Sep	13- Sep	14- Sep	15- Sep	16- Sep	17- Sep	18- Sep
		Day 1	Day 2	Day 3	Day 4	Day 5	Day 6	Day 7
1	ANDAMAN & NICOBAR ISLANDS	FWS	FWS	FWS	FWS	FWS	WS	WS
2	ARUNACHAL PRADESH	FWS	WS	WS	WS	WS	FWS	FWS
3	ASSAM & MEHGHALAYA	WS	WS	WS	WS	WS	FWS	SCT
4	NAGALAND, MANIPUR, MIZORAM AND TRIPURA	WS	WS	WS	WS	FWS	FWS	SCT
5	SUB HIMALAYAN WEST BENGAL & SIKKIM	WS	WS	WS	WS	WS	FWS	FWS
6	GANGETIC WEST BENGAL	FWS	FWS	FWS	WS	WS	WS	FWS
7	ODISHA	WS	FWS	SCT	SCT	SCT	SCT	SCT
8	JHARKHAND	FWS	FWS	FWS	WS	WS	WS	WS
9	BIHAR	SCT	FWS	FWS	FWS	FWS	FWS	SCT
10	EAST UTTAR PRADESH	ISOL	ISOL	ISOL	SCT	SCT	SCT	SCT
11	WEST UTTAR PRADESH	ISOL	ISOL	ISOL	ISOL	SCT	SCT	ISOL
12	UTTARAKHAND	WS	WS	FWS	FWS	FWS	SCT	SCT
13	HARYANA, CHANDIGARH & DELHI	ISOL	SCT	SCT	ISOL	ISOL	SCT	SCT
14	PUNJAB	ISOL	ISOL	ISOL	ISOL	ISOL	SCT	SCT
15	HIMACHAL PRADESH	SCT	FWS	FWS	SCT	SCT	SCT	FWS
16	JAMMU AND KASHMIR AND LADAKH	ISOL	SCT	SCT	SCT	SCT	SCT	FWS
17	WEST RAJASTHAN	DRY	DRY	DRY	DRY	DRY	DRY	ISOL
18	EAST RAJASTHAN	DRY	ISOL	ISOL	ISOL	ISOL	ISOL	SCT
19	WEST MADHYA PRADESH	SCT	SCT	FWS	FWS	FWS	FWS	FWS
20	EAST MADHYA PRADESH	SCT	FWS	FWS	FWS	FWS	FWS	FWS
21	GUJRAT REGION	ISOL	SCT	FWS	FWS	FWS	SCT	SCT
22	SAURASHTRA & KUTCH	ISOL	ISOL	SCT	SCT	SCT	ISOL	ISOL
23	KONKAN & GOA	SCT	FWS	WS	WS	FWS	FWS	FWS
24	MADHYA MAHARASHTRA	SCT	FWS	WS	FWS	SCT	SCT	SCT
25	MARATHWADA	SCT	FWS	WS	FWS	SCT	ISOL	ISOL
26	VIDARBHA	WS	WS	WS	FWS	FWS	SCT	SCT
27	CHHATTISGARH	WS	WS	WS	FWS	FWS	FWS	FWS
28	COASTAL ANDHRA PRADESH	WS	FWS	FWS	SCT	SCT	SCT	FWS
29	TELANGANA	WS	WS	WS	FWS	FWS	FWS	FWS
30	RAYALASEEMA	FWS	FWS	SCT	ISOL	SCT	SCT	SCT
31	TAMILNADU & PUDUCHERRY	ISOL	ISOL	ISOL	SCT	SCT	SCT	SCT
32	COSTAL KARNATAKA	SCT	SCT	FWS	FWS	FWS	WS	WS
33	NORTH INTERIOR KARNATAKA	FWS	WS	FWS	FWS	FWS	FWS	FWS
34	SOUTH INTERIOR KARNATAKA	FWS	SCT	SCT	FWS	FWS	FWS	FWS
35	KERALA AND MAHE	ISOL	ISOL	SCT	SCT	SCT	SCT	ISOL
36	LAKSHADWEEP	SCT	SCT	SCT	SCT	SCT	SCT	SCT

- As the lead period increases forecast accuracy decrease.





- Action may be taken based on ORANGE AND REDCOLOUR warnings.
- Vulnerable regions likely urban and hilly areas action may be initiated for heavy rainfall warning.
- As the lead period increases forecast accuracy decreases.

Detailed districtwise Multi Hazard weather warning for next five days available at
<https://mausam.imd.gov.in/responsive/districtWiseWarningGIS.php>

Weather forecast over Delhi/NCR during 12th to 15th September 2025**Past Weather:**

There has been no large change in the minimum and maximum temperature over Delhi/NCR during the past 24 hours. The maximum and minimum temperatures over Delhi were around 32 to 34°C and 22 to 25°C respectively. The minimum temperature was below normal up to 1 - 2°C and maximum temperature was near normal. Partly cloudy sky conditions with predominant surface wind from the west/northwest direction with wind speeds up to 20 kmph prevailed during the past 24 hours. Partly cloudy sky conditions with a wind speed of less than 20 kmph from the west direction prevailed over the region in the forenoon today.

Weather Forecast:

12.09.2025: Partly cloudy sky. Sustained surface winds 20-30 kmph gusting to 40 kmph. The maximum and minimum temperatures over Delhi are likely to be in the range of 33 to 35°C. The maximum temperature will be above normal up to 1 to 2°C. The predominant surface wind will likely to be from the northwest direction with a wind speed of up to 20-25 kmph during afternoon hours. The wind speed will decrease becoming less than 20 kmph from the west direction during the evening and night.

13.09.2025: Partly cloudy sky becoming generally cloudy sky. Possibility of very light rain likely at isolated places. The maximum and minimum temperatures over Delhi are likely to be in the range of 33 to 35°C and 24 to 26°C respectively. The minimum temperature will be near normal and the maximum temperature will be above normal up to 1 - 2°C. The predominant surface wind will likely to be from the northwest direction with a wind speed of up to 20-22 kmph during morning hours. The wind speed will gradually increase becoming less than 25 kmph from the northwest direction in the afternoon. The wind speed will decrease becoming less than 15 kmph from the northeast direction during the evening and night.

14.09.2025: Partly cloudy sky. Possibility of very light rain likely at isolated places. The maximum and minimum temperatures over Delhi are likely to be in the range of 32 to 34°C and 24 to 26°C respectively. The minimum temperature will be near normal and the maximum temperature will be near normal. The predominant surface wind will likely to be from the southwest direction with a wind speed of up to 08-12 kmph during morning hours. The wind speed will gradually increase becoming less than 20 kmph from the northwest direction in the afternoon. The wind speed will decrease becoming less than 15 kmph from the southwest direction during the evening and night.

15.09.2025: Partly cloudy. The maximum and minimum temperatures over Delhi are likely to be in the range of 33 to 35°C and 24 to 26°C respectively. The minimum temperature temperatures will be near normal and the maximum temperature will be above normal up to 1 - 2°C. The predominant surface wind will likely to be from the northwest direction with a wind speed of up to 20-25 kmph during morning hours. The wind speed will gradually decrease becoming less than 20 kmph from the northwest direction in the afternoon. The wind speed will decrease becoming less than 15 kmph from the southwest direction during the evening and night.

Impact & Action Suggested due to

- ❖ **Heavy to very heavy rainfall (12-20 cm)** at isolated places over Odisha, Coastal Andhra Pradesh & Yanam on 12th; Uttarakhand, Telangana on 12th & 13th; Assam & Meghalaya during 12th-16th; Nagaland, Manipur, Mizoram & Tripura during 12th-15th; Arunachal Pradesh during 13th -15th; Bihar, Marathawada on 13th; Sub-Himalayan West Bengal & Sikkim on 13th & 14th; Konkan & Goa and Madhya Maharashtra on 14th & 15th September.

Impact Expected

- Localized Flooding of roads, water logging in low lying areas and closure of underpasses mainly in urban areas of the above region.
- Occasional reduction in visibility due to heavy rainfall.
- Disruption of traffic in major cities due to water logging in roads leading to increased travel time.
- Minor damage to kutchha roads.
- Possibilities of damage to vulnerable structure.
- Localized Landslides/Mudslides/landslips/mudslips/landsinks/mudsinks.
- Damage to horticulture and standing crops in some areas due to inundation.

- It may lead to riverine flooding in some river catchments (for riverine flooding please visit Web page of CWC)

Action Suggested

- Check for traffic congestion on your route before leaving for your destination.
- Follow any traffic advisories that are issued in this regard.
- Avoid going to areas that face the water logging problems often.
- Avoid staying in vulnerable structure.

Agromet advisories for likely impact of Heavy / Heavy to Very Heavy Rainfall

- In Uttarakhand, maintain proper drainage channels in sugarcane, black gram, green gram, soybean and maize fields in Bhabar and Tarai Zone; green gram, barnyard millet and finger millet in Sub Humid Sub Tropic Zone. In Hill zone, ensure proper drainage in finger millets, horse gram, and red gram in Hill Zone and Keep the harvested produce of crops and vegetables at safer places.
- In Arunachal Pradesh, immediately harvest matured crops of *Jhum* rice, finger millet, soybean and matured bunches of banana and shift to properly covered shelter. Maintain proper drainage in standing crops like rice, soybean, finger millet and vegetables to avoid water stagnation.
- In Assam: In Lower Brahmaputra Valley Zone, ensure proper drainage system in *Sali* rice fields and nursery bed of vegetables. Cover the nursery bed with thin polythin to avoid the damages due to heavy rainfall. In Barak Valley Zone, postpone the sowing of green gram and black gram and provide adequate drainage facilities in fields of rice, vegetables and already sown green gram and black gram.
- In Meghalaya, maintain proper drainage in ginger and vegetable fields and fruit orchards. Provide support to banana plants to prevent lodging. Maintain a thin layer of 2-3 cm stagnant water in rice fields after transplanting.
- In Nagaland, undertake harvesting of matured Jhum rice, pods of sesame and Naga King chilli and store the harvested produce in safe places. Maintain 3-5 cm stagnate water in rice fields.
- In Mizoram, undertake harvesting of matured cobs of maize.
- In Manipur, harvest matured cobs of maize, matured pods of soybean and groundnut and matured grains of finger millet.
- In Sub-Himalayan West Bengal, make provision to drain out excess water from *aman* paddy and vegetable fields (chilli, bitter gourd, pointed gourd, okra, brinjal etc.) in Terai Zone and in the fields of black gram, finger millet, ginger, dalley khorsani, vegetables and fruit orchards in Hill Zone.
- In Bihar, ensure proper drainage to remove excess rainwater from standing crops such as maize, pearl millet and vegetables in North East Alluvial Zone.
- In Odisha, make arrangements for draining out excess water from the field of pulses (pigeon pea, black gram, green gram), maize, groundnut, vegetables (tomato, brinjal, okra, chilli) and banana in Koraput and Malkangiri districts.
- In Chhattisgarh, make arrangements to drain out excess water from the fields of rice, minor millets, kharif maize, pulses and oilseed crops in Bastar Plateau Zone.
- In Maharashtra, immediately harvest matured green gram and black gram in Madhya Maharashtra and Marathwada and matured green gram in West Vidarbha and keep the harvested produce at safer places. Make arrangements to drain out excess water from fields of rice, soybean, cotton, vegetables and fruit orchards in Madhya Maharashtra and cotton, pigeon pea, soybean, sugarcane, vegetables and fruit orchards in Marathwada.
- In Andhra Pradesh, make arrangements to drain out excess water from fields of rice, finger millet, pigeon pea, sugarcane, coconut and vegetables in North Coastal Zone and rice, cotton, groundnut, green gram, black gram, maize and vegetable fields in High Altitude Tribal Zone.
- In Telangana, drain out excess water from fields of rice, cotton, maize, soybean, pigeon pea, turmeric and vegetables in Northern Telangana Zone and rice, cotton, soybean, maize and pigeon pea in Southern Telangana Zone.

Livestock / Fishery

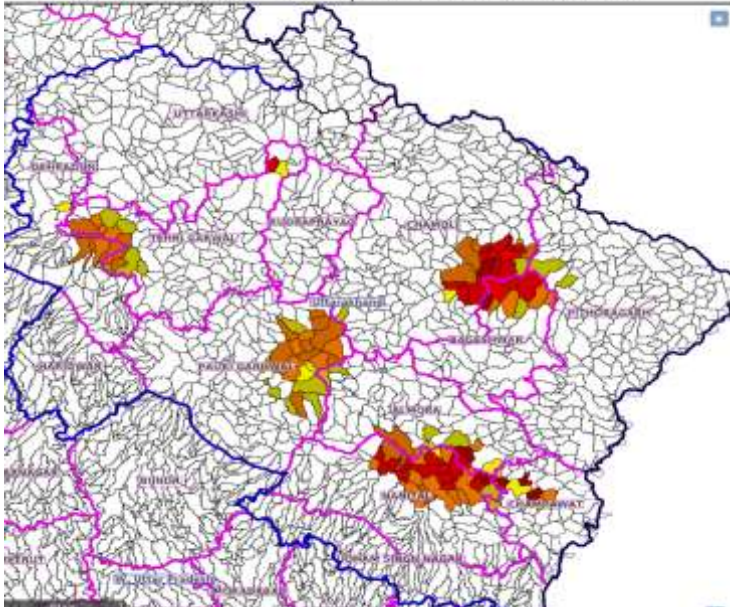
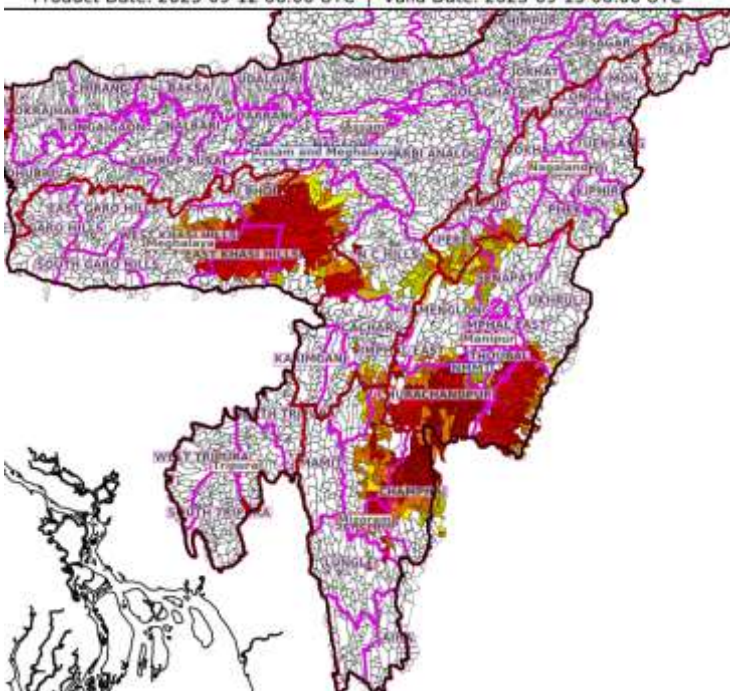
- Keep the animals inside the shed during heavy rainfall and provide them balanced feed.
- Store feed and fodder in a safe place to prevent spoilage.

- Construct an outlet with proper netting around the ponds to drain out excess water, thereby preventing fish from escaping in case of overflow.

Agromet advisories for likely impact of Thunderstorm / Gusty Winds / Squally Winds

- Provide mechanical support to horticultural crops and staking or support to vegetables and young fruit plants / fruit-bearing plants to avoid lodging due to strong winds.

Flash Flood Guidance:

<p>24 hours Outlook for the Flash Flood Risk (FFR) till 1130 IST of 13-09-2025:</p> <p>Low to Moderate flash flood risk likely over few watersheds & neighbourhoods of following Met Sub-divisions during next 24 hours.</p> <p>Uttarakhand - Almora, Bageshwar, Chamoli, Champawat, Dehradun, Nanital, Pauri Garhwal, Pithoragarh and Tehri Garwal districts.</p> <p>Surface runoff/ Inundation may occur at some fully saturated soils & low-lying areas over Area of Concern (AoC) as shown in map due to expected rainfall occurrence in next 24 hours.</p>	<p>Product: GFS FFR Timescale: 24-hr Region: "INDIA" Product Date: 2025-09-12 06:00 UTC Valid Date: 2025-09-13 06:00 UTC</p> 
<p>24 hours Outlook for the Flash Flood Risk (FFR) till 1130 IST of 13-09-2025:</p> <p>Low to Moderate flash flood risk likely over few watersheds & neighbourhoods of following Met Sub-divisions during next 24 hours.</p> <p>Assam & Meghalaya - Cachar, Karbi Analog, N.C Hills, East Khasi Hills, Ri Bhoi, West Khasi Hills and Jaintia Hills districts.</p> <p>Nagaland Mizoram Manipur Tripura (NMMT) – Manipur: Bishnupur, Chandel, Churachandpur, Senapati, Tamenglong, Thoubal and Ukhrul districts Mizoram: Aizawl, Champhai, Kolasib and Lunglei districts Nagaland: Dimapur, Kohima and Peren districts</p> <p>Surface runoff/ Inundation may occur at some fully saturated soils & low-lying areas over Area of Concern (AoC) as shown in map due to expected rainfall occurrence in next 24 hours.</p>	<p>Product: GFS FFR Timescale: 24-hr Region: "INDIA" Product Date: 2025-09-12 06:00 UTC Valid Date: 2025-09-13 06:00 UTC</p> 

Legends & abbreviations:

- ❖ **Heavy Rain:**64.5-115.5mm; **Very Heavy Rain:**115.6-204.4mm; **Extremely Heavy Rain:** >204.4mm.
- ❖ **Obsy:** Observatory; Automatic Weather Station; **ARG:** Automatic Rain Gauge; **dist:** District; **NH:** National Highway; **KVK:** Krishi Vigyan Kendra; **DVC:** Damodar Valley Corporation; **PTO:** Part Time Office, **Aero:** Aerodrome, **IAF:** Indian Air Force.
- ❖ **Region wise classification of meteorological Sub-Divisions:**
 - **Northwest India:** Western Himalayan Region (Jammu-Kashmir-Ladakh-Gilgit-Baltistan-Muzaffarabad, Himachal Pradesh and Uttarakhand); Punjab, Haryana-Chandigarh-Delhi; West Uttar Pradesh, East Uttar Pradesh, West Rajasthan and East Rajasthan.
 - **Central India:** West Madhya Pradesh, East Madhya Pradesh, Vidarbha and Chhattisgarh.
 - **East India:** Bihar, Jharkhand, Sub-Himalayan West Bengal & Sikkim; Gangetic West Bengal, Odisha and Andaman & Nicobar Islands.
 - **Northeast India:** Arunachal Pradesh, Assam & Meghalaya and Nagaland, Manipur, Mizoram & Tripura.
 - **West India:** Gujarat Region, Saurashtra & Kutch, Konkan & Goa, Madhya Maharashtra and Marathawada.
 - **South India:** Coastal Andhra Pradesh & Yanam, Telangana, Rayalaseema, Coastal Karnataka, North Interior Karnataka, South Interior Karnataka, Kerala & Mahe, Tamil Nadu, Puducherry & Karaikal and Lakshadweep.

LEGENDS

1. अंडमान और निकोबार द्वीपसमूह

2. अरुणाचल प्रदेश

3. असम और मेघालय

4. नागालैंड, मणिपुर, मिजोरम और त्रिपुरा

5. उप-हिमालयी पश्चिम बंगाल और सिक्किम

6. गंगीय पश्चिम बंगाल

7. ओडिशा

8. झारखंड

9. बिहार

10. पूर्वी उत्तर प्रदेश

11. पश्चिम उत्तर प्रदेश

12. उत्तराखंड

13. हरियाणा, चंडीगढ़ और दिल्ली

14. पंजाब

15. हिमाचल प्रदेश

16. जम्मू और कश्मीर और लद्दाख

17. पश्चिम राजस्थान

18. पूर्वी राजस्थान

19. पश्चिम मध्य प्रदेश

20. पूर्वी मध्य प्रदेश

21. गुजरात

22. सौराष्ट्र

23. कोंकण और गोवा

24. मध्य महाराष्ट्र

25. मराठवाड़ा

26. विदर्भ

27. छत्तीसगढ़

28. तटीय आंध्र प्रदेश और यनम

29. तेलंगाना

30. रायलसीमा

31. तमिलनाडु, पुडुचेरी और कराईकल

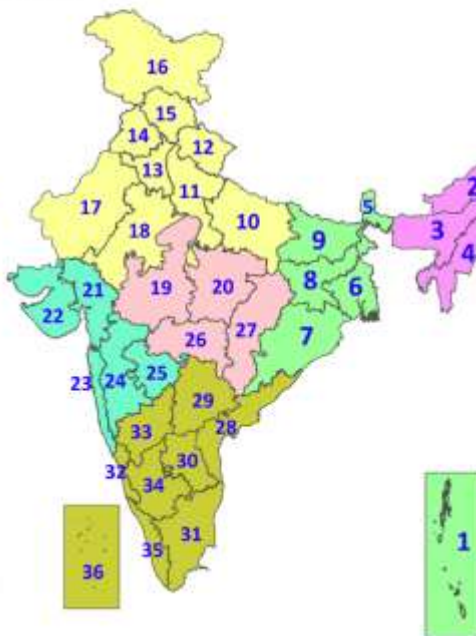
32. तटीय कर्नाटक

33. आंतरिक उत्तरी कर्नाटक

34. आंतरिक दक्षिणी कर्नाटक

35. केरल और माहे

36. लक्षद्वीप



1. Andaman & Nicobar Islands

2. Arunachal Pradesh

3. Assam & Meghalaya

4. Nagaland, Manipur, Mizoram & Tripura

5. Sub-Himalayan West Bengal & Sikkim

6. Gangetic West Bengal

7. Odisha

8. Jharkhand

9. Bihar

10. East Uttar Pradesh

11. West Uttar Pradesh

12. Uttarakhand

13. Haryana, Chandigarh & Delhi

14. Punjab

15. Himachal Pradesh

16. Jammu & Kashmir and Ladakh

17. West Rajasthan

18. East Rajasthan

19. West Madhya Pradesh

20. East Madhya Pradesh

21. Gujarat

22. Saurashtra

23. Konkan & Goa

24. Madhya Maharashtra

25. Marathwada

26. Vidarbha

27. Chhattisgarh

28. Coastal Andhra Pradesh & Yanam

29. Telangana

30. Rayalaseema

31. Tamilnadu, Puducherry & Karaikal

32. Coastal Karnataka

33. North Interior Karnataka

34. South Interior Karnataka

35. Kerala & Mahe

36. Lakshadweep

SPATIAL DISTRIBUTION (% of Stations reporting)

% Stations	Category	% Stations	Category
76-100	Widespread (WS/Most Places)	26-50	Scattered (SCT/A Few Places)
51-75	Fairly Widespread (FWS/Many Places)	1-25	Isolated (ISOL)



Fog



Heavy Rain



Very Heavy Rain



Extremely Heavy Rain



Thunder & Lightning



Hailstorm



Dust Raising Winds



Heavy Snow



Dust Storm



Heat Wave



Warm Night



Hot Day



Hot & Humid



Strong Surface Winds



Cold Wave



Cold Day



Ground Frost

COLOUR CODED WARNING

No Warning (No Action)

Watch (Be Aware)

Alert (Be Prepared To Take Action)

Warning (Take Action)

Probabilistic Forecast

Terms	Probability of Occurrence (%)
Unlikely	< 25
Likely	25 - 50
Very Likely	50 - 75
Most Likely	> 75

* Red colour warning does not mean "Red Alert", Red colour warning means "Take Action".

Forecast and Warning for any day is valid from 0830 hours IST of day till 0830 hours IST of next day.

For more details, kindly visit <https://mausam.imd.gov.in> or contact: 011-2434-4599

(Service to the Nation since 1875)

DEFINITION/CRITERIA

Rain/ Snow *

Heavy: 64.5 to 115.5 mm/cm *
Very Heavy: 115.6 to 204.4 mm/cm *
Extremely Heavy: > 204.4 mm/cm *

Heat Wave

When maximum temperature of a station reaches $\geq 40^{\circ}\text{C}$ for plains and $\geq 30^{\circ}\text{C}$ for hilly regions
(a) Based on Departure from normal

Heat Wave: Maximum Temperature Departure from normal 4.5°C to 6.4°C .

Severe Heat Wave: Maximum Temperature Departure from normal $\geq 6.5^{\circ}\text{C}$

(b). Based on Actual maximum temperature

Heat Wave: When actual maximum temperature $\geq 45^{\circ}\text{C}$.

Severe Heat Wave: When actual maximum temperature $\geq 47^{\circ}\text{C}$.

(c). Criteria for heat wave for coastal stations

When maximum temperature departure is $> 4.5^{\circ}\text{C}$ from normal. Heat Wave may be described provided maximum temperature $\geq 37^{\circ}\text{C}$.

Warm Night

When maximum temperature remains 40°C

Warm Night: When minimum temperature departure 4.5°C to 6.4°C .

Severe Warm Night: When minimum temperature departure $> 6.4^{\circ}\text{C}$.

Cold Wave

When minimum temperature of a station $\leq 10^{\circ}\text{C}$ for plains and $\leq 0^{\circ}\text{C}$ for hilly regions.

(a). Based on departure

Cold Wave: Minimum Temperature Departure from normal -4.5°C to -6.4°C .

Severe Cold Wave: Minimum Temperature Departure from normal $\leq -6.5^{\circ}\text{C}$

(b) Based on actual Minimum Temperature (for Plains only)

Cold Wave: When Minimum Temperature is $\leq 4.0^{\circ}\text{C}$

Severe Cold Wave: When Minimum Temperature is $\leq 2.0^{\circ}\text{C}$

(c) For Coastal Stations

When Minimum Temperature departure is $\leq -4.5^{\circ}\text{C}$ & actual Minimum Temperature is $\leq 15^{\circ}\text{C}$

Cold Day

When minimum temperature of a station $\leq 10^{\circ}\text{C}$ for plains and $\leq 0^{\circ}\text{C}$ for hilly regions

Based on departure

Cold Day: Maximum Temperature Departure from normal -4.5°C to -6.4°C .

Severe Cold Day: Maximum Temperature Departure from normal $\leq -6.5^{\circ}\text{C}$

Fog

Phenomenon of small droplets suspended in air and the horizontal visibility $< 1\text{km}$

Moderate Fog: When the visibility between 500-200 metres

Dense Fog: when the visibility between 50- 200 metres

Very Dense Fog: when the visibility < 50 metres

Thunderstorm

Sudden electrical discharges manifested by a flash of light (Lightning) and a sharp rumbling sound (thunder)

Dust/Sand Storm

An ensemble of particles of dust or sand energetically lifted to great heights by a strong and turbulent wind.

Frost

Ice deposits on ground

Air temperature $\leq 4^{\circ}\text{C}$ (over Plains)

Squall

A strong wind that rises suddenly, lasts for atleast 1 minute.

Moderate: Wind speed 52-61 kmph

Severe: Wind speed 62-67 kmph

Very Severe: Wind speed > 67 kmph

Sea State

Effect of various waves in the sea over specific area

Rough to very rough: Wind speed 41-62 kmph (22-33 knots) & Wave height 2.5-6 metre

High to very high: Wind speed 63-117 kmph (34-63 knots) & Wave height 6-14 metre

Phenomenal: Wind speed > 117 kmph (> 63 knots) & Wave height > 14 metre

Cyclone

Cyclonic Storm: Wind speed 62-87 kmph (34-47 knots)

Severe Cyclonic Storm: Wind speed 88-117 kmph (48-63 knots)

Very Severe Cyclonic Storm: Wind speed 118-165 kmph (64 - 89 knots)

Extremely Severe Cyclonic Storm: Wind speed 166-220 kmph (90 -119 knots)

Super Cyclone Storm: Wind speed > 220 kmph (> 119 knots)

* Red colour warning does not mean "Red Alert", Red colour warning means "Take Action".

Forecast and Warning for any day is valid from 0830 hours IST of day till 0830 hours IST of next day.

For more details, kindly visit <https://mausam.imd.gov.in> or contact: 011-2434-4599

(Service to the Nation since 1875)

Hot and Humid: When maximum temperatures remain 3°C above normal along with the above normal relative humidity.